

# CSC004

## System Interface Unit (SIU)



### Features

- NFPA Styles 4 and 7 wiring applicable
- Max. 64 nodes available on network
- Status LEDs
- Compact size unit
- Easy installation

### Description

The SIU is the optional device for the system. The SIU provides the system with the ability to establish communication between the System Monitoring Program (SMP) installed in a personal computer and FACPs on the network. The network is comprised of 64 nodes so that 1 set of SIU and SMP is able to communicate with a maximum of 63 FACPs.

The SIU is comprised of two parts such as the AC/DC switching power supply part and the communication part. The AC/DC switching power supply part converts the AC power to the DC power, and supplies the 24 VDC power to the communication part for its operation. The communication part consists of a central microprocessor, Arcnet controller, and memory that allows it to communicate with other FACPs on the network. Using the optional Fiber-optic Interface Module (PCA-2707XA FIM or PCA-N3060-FIM2) together with SIU provides the system with the ability to use the fiber optic system for the network. The 5 VDC power for PCA-2707XA FIM or PCA-N3060-FIM2 is also supplied from the SIU to the PCA-2707XA FIM or PCA-N3060-FIM2 when required.

The SIU can be easily connected to the RS-232C port of the SMP personal computer using a dedicated connector cable.

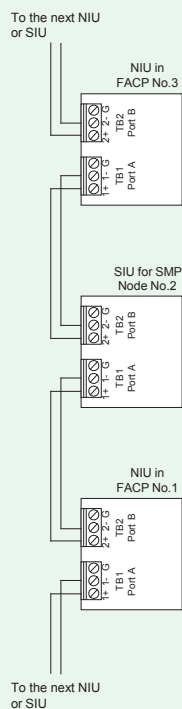
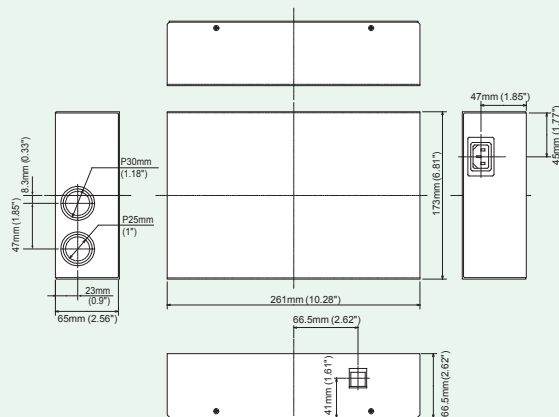
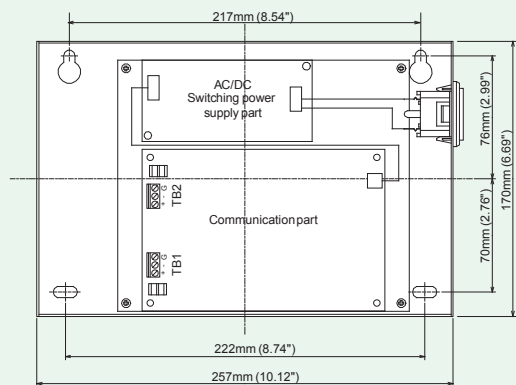
The SIU is equipped with status LEDs. The [+5V] LED (green) indicates the normal supply of 5 VDC to the communication part when it is on. The [TXN] LED (green) indicates normal communication with the personal computer of SMP when flashing. The [TXD] LED (green) indicates normal communication with the network when it is on. The [ATBL] LED (yellow) indicates open circuit in wiring for Port A when it is on. The [BTBL] LED (yellow) indicates open circuit in wiring for Port B when it is on.

### Ordering Information

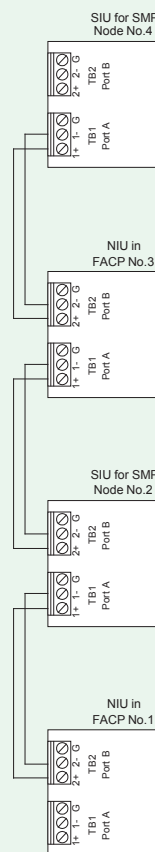
Part No. CSC004

### Specifications

No.	Item	Specification
1	Rated Ac input voltage	110 V/240 VAC (Universal)
2	Maximum electric power consumption	25 VA (120 VAC)/32 VA (240 VAC)
3	Network wiring style	NFPA Styles 4 and 7
4	Maximum no. of nodes	64
5	Max. network length between a node and another node	600 m (for copper/metal cable) 2000 m (50/125), 1700 m (62.5/125) (for PCA-2707XA FIM) 5000 m (9/125) (for PCA-N3060-FIM2)
6	Wiring characteristic impedance	100
7	Maximum wiring DC resistance	72
8	Maximum wiring capacitance	80 $\mu$ F
9	Operating temperature range	0 to 49 °C (32 to 120 °F)
10	Operating humidity range	0 to 93 % (Non-condensing)
11	Body color	White
12	Dimensions	261 mm (10.28")(H) x 173 mm (6.81")(W) x 66.5 mm (2.62")(D)



Style 7 wiring



Style 4 wiring

## NOTE

- The information contained herein does not purport to cover all the details or variations of the equipment described, nor to provide for every possible contingency that may be met in connection with its installation, operation or maintenance.
- Specifications are subject to change without notice. Contact Nohmi before relying on the information.
- Actual performance is based on proper application of the product by a qualified professional.
- Should further information be required or should particular concerns arise that are not covered sufficiently for the purchaser's purposes, the matter should be referred to Nohmi or your nearest distributor.

**NOHMI**  
NOHMI BOSAI LTD.

• Head Office: 4-7-3 Kudan-Minami, Chiyoda-ku, Tokyo  
102-8277, Japan  
• Phone: (81)3-3265-0231  
• F A X: (81)3-3265-5348  
URL <https://www.nohmi.co.jp/english/>

Contact